



## Part 2: Proofs of other compound angle formulas

### Even/Odd Properties

$$\cos(-x) = \cos x$$

$$\sin(-x) = -\sin x$$

**Example 1:** Prove  $\cos(x - y) = \cos x \cos y + \sin x \sin y$

LS

$$= \cos(x - y)$$

$$= \cos[x + (-y)]$$

$$= \cos x \cos(-y) - \sin x \sin(-y)$$

$$= \cos x \cos y - \sin x (-\sin y)$$

$$= \cos x \cos y + \sin x \sin y$$

RS

$$= \cos x \cos y + \sin x \sin y$$

LS = RS

**Example 2:**

a) Prove  $\sin(x - y) = \sin x \cos y - \cos x \sin y$

LS

$$= \sin(x - y)$$

$$= \sin x \cos(-y) + \cos x \sin(-y)$$

$$= \sin x \cos y + \cos x (-\sin y)$$

$$= \sin x \cos y - \cos x \sin y$$

RS

$$= \sin x \cos y - \cos x \sin y$$

LS = RS

### Compound Angle Formulas

$$\sin(x + y) = \sin x \cos y + \cos x \sin y$$

$$\sin(x - y) = \sin x \cos y - \cos x \sin y$$

$$\cos(x + y) = \cos x \cos y - \sin x \sin y$$

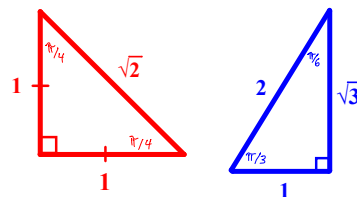
$$\cos(x - y) = \cos x \cos y + \sin x \sin y$$

$$\tan(x + y) = \frac{\tan x + \tan y}{1 - \tan x \tan y}$$

$$\tan(x - y) = \frac{\tan x - \tan y}{1 + \tan x \tan y}$$

### Part 3: Determine Exact Trig Ratios for Angles other than Special Angles

By expressing an angle as a sum or difference of angles in the special triangles, exact values of other angles can be determined.



**Example 3:** Use compound angle formulas to determine exact values for

**a)**  $\sin \frac{\pi}{12}$

$$\sin \frac{\pi}{12} = \sin \left( \frac{4\pi}{12} - \frac{3\pi}{12} \right)$$

$$= \sin \left( \frac{\pi}{3} - \frac{\pi}{4} \right)$$

$$= \sin \left( \frac{\pi}{3} \right) \cos \left( \frac{\pi}{4} \right) - \cos \left( \frac{\pi}{3} \right) \sin \left( \frac{\pi}{4} \right)$$

$$= \frac{\sqrt{3}}{2} \left( \frac{1}{\sqrt{2}} \right) - \left( \frac{1}{2} \right) \left( \frac{1}{\sqrt{2}} \right)$$

$$= \frac{\sqrt{3}}{2\sqrt{2}} - \frac{1}{2\sqrt{2}}$$

$$= \frac{\sqrt{3}-1}{2\sqrt{2}}$$

**b)**  $\tan \left( -\frac{5\pi}{12} \right)$

$$\tan \left( -\frac{5\pi}{12} \right) = -\tan \left( \frac{5\pi}{12} \right)$$

$$= -\tan \left( \frac{2\pi}{12} + \frac{3\pi}{12} \right)$$

$$= -\frac{\tan \left( \frac{2\pi}{12} \right) + \tan \left( \frac{3\pi}{12} \right)}{1 - \tan \left( \frac{2\pi}{12} \right) \tan \left( \frac{3\pi}{12} \right)}$$

$$= -\frac{\tan \left( \frac{\pi}{6} \right) + \tan \left( \frac{\pi}{4} \right)}{1 - \tan \left( \frac{\pi}{6} \right) \tan \left( \frac{\pi}{4} \right)}$$

$$= -\frac{\frac{1}{\sqrt{3}} + 1}{1 - \frac{1}{\sqrt{3}}}$$

$$= -\frac{\frac{1}{\sqrt{3}} + \frac{\sqrt{3}}{\sqrt{3}}}{\frac{\sqrt{3}-1}{\sqrt{3}}}$$

$$= -\frac{\frac{1+\sqrt{3}}{\sqrt{3}}}{\frac{\sqrt{3}-1}{\sqrt{3}}}$$

$$= -\frac{1+\sqrt{3}}{\sqrt{3}-1}$$

## Part 4: Use Compound Angle Formulas to Simplify Trig Expressions

**Example 4:** Simplify the following expression

$$\begin{aligned} & \cos \frac{7\pi}{12} \cos \frac{5\pi}{12} + \sin \frac{7\pi}{12} \sin \frac{5\pi}{12} \\ &= \cos \left( \frac{7\pi}{12} - \frac{5\pi}{12} \right) \\ &= \cos \frac{2\pi}{12} \\ &= \cos \frac{\pi}{6} \\ &= \frac{\sqrt{3}}{2} \end{aligned}$$

## Part 5: Application

**Example 5:** Evaluate  $\sin(a + b)$ , where  $a$  and  $b$  are both angles in the second quadrant; given  $\sin a = \frac{3}{5}$  and  $\sin b = \frac{5}{13}$

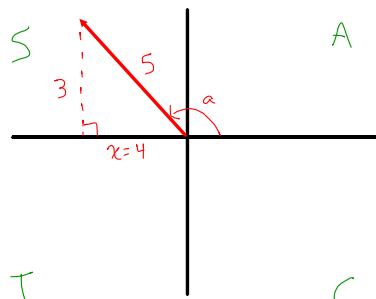
Start by drawing both terminal arms in the second quadrant and solving for the third side.

$$\sin(a + b) = \sin a \cos b + \cos a \sin b$$

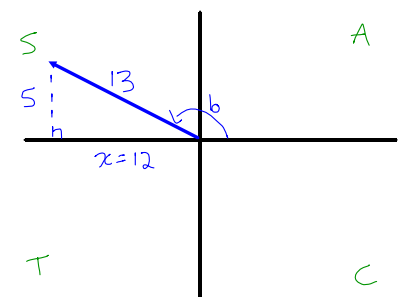
$$= \left(\frac{3}{5}\right) \left(-\frac{12}{13}\right) + \left(-\frac{4}{5}\right) \left(\frac{5}{13}\right)$$

$$= -\frac{36}{65} - \frac{20}{65}$$

$$= -\frac{56}{65}$$



$$\begin{aligned} x^2 + 3^2 &= 5^2 \\ x^2 &= 16 \\ x &= 4 \end{aligned}$$



$$\begin{aligned} x^2 + 5^2 &= 13^2 \\ x^2 &= 144 \\ x &= 12 \end{aligned}$$