

## SOLUTIONS

1) Find the equation of any asymptotes for the following functions. Then, find the one-sided limits approaching the vertical asymptotes.

$$a) f(x) = \frac{x+3}{x^2-4} = \frac{x+3}{(x-2)(x+2)}$$

$$HA: y=0$$

$$VA: x=2, x=-2$$

$$\text{Tests: } f(1.99) \approx -125$$

$$f(2.01) \approx 125$$

$$f(-1.99) \approx -25$$

$$f(-2.01) \approx 25$$

$$\text{Limits: } \lim_{x \rightarrow 2^-} f(x) = -\infty$$

$$\lim_{x \rightarrow 2^+} f(x) = \infty$$

$$\lim_{x \rightarrow -2^-} f(x) = \infty$$

$$\lim_{x \rightarrow -2^+} f(x) = -\infty$$

$$c) y = 2x + \frac{1}{x} = \frac{2x^2+1}{x}$$

$$SA: y=2x$$

$$VA: x=0$$

$$\text{Tests: } y(-0.01) \approx -100$$

$$y(0.01) \approx 100$$

Limits:

$$\lim_{x \rightarrow 0^+} y = \infty$$

$$\lim_{x \rightarrow 0^-} y = -\infty$$

$$b) y = \frac{x^2}{x^2-3x+2} = \frac{x^2}{(x-2)(x-1)}$$

$$HA: y=1$$

$$VA: x=2, x=1$$

$$\text{Tests: } y(1.99) \approx -400$$

$$y(2.01) \approx 400$$

$$y(0.99) \approx 97$$

$$y(1.01) \approx -103$$

$$\text{Limits: } \lim_{x \rightarrow 2^+} y = \infty$$

$$\lim_{x \rightarrow 2^-} y = -\infty$$

$$\lim_{x \rightarrow 1^+} y = -\infty$$

$$\lim_{x \rightarrow 1^-} y = \infty$$

$$d) g(x) = \frac{2x-3}{x^2-6x+9} = \frac{2x-3}{(x-3)^2}$$

$$HA: y=0$$

$$VA: x=3$$

Tests:

$$g(2.99) = 29800$$

$$g(3.01) = 30200$$

Limits:

$$\lim_{x \rightarrow 3^+} g(x) = \infty$$

$$\lim_{x \rightarrow 3^-} g(x) = \infty$$

2) Find the derivative of each function. Then, determine whether the function has any local extrema.

a)  $f(x) = \frac{2}{x+3}$

$$f'(x) = \frac{0(x+3) - 1(2)}{(x+3)^2}$$

$$f'(x) = \frac{-2}{(x+3)^2}$$

No critical points since  $f'(x) \neq 0$   
and  $x = -3$  is not in the domain of  $f(x)$

∴ no local extrema.

b)  $h(x) = \frac{-3}{(x-2)^2}$

$$h'(x) = \frac{0(x-2)^2 - 2(x-2)(1)(-3)}{[(x-2)^2]^2}$$

$$h'(x) = \frac{6(x-2)}{(x-2)^4}$$

$$h'(x) = \frac{6}{(x-2)^3}$$

$h'(x) \neq 0$  and  $x = 2$  is not in the domain of  $h(x)$ .

∴ no critical points and no local extrema.

3) Consider the function  $f(x) = \frac{-2}{(x+1)^2}$  VA:  $x = -1$

a) Find the intervals of increase and decrease for  $f(x)$ .

$$f'(x) = \frac{0(x+1)^2 - 2(x+1)(1)(-2)}{(x+1)^4}$$

$$f'(x) = \frac{4(x+1)}{(x+1)^4}$$

$$f'(x) = \frac{4}{(x+1)^3}$$

No critical points.

Only use VA as a dividing point when testing.

	$-\infty$	$-1$	$\infty$
Test	$-2$	$0$	
$f'(x)$	$-$	$+$	
$f(x)$	dec. ↘	inc. ↗	

increasing:  $x > -1$

decreasing:  $x < -1$

b) Find the intervals of concavity for  $f(x)$ .

$$f''(x) = \frac{0(x+1)^3 - 3(x+1)^2(1)(4)}{(x+1)^6}$$

$$f''(x) = \frac{-12(x+1)^2}{(x+1)^6}$$

$$f''(x) = \frac{-12}{(x+1)^4}$$

$$f''(x) \neq 0$$

only possible change in concavity is at the VA

	$-\infty$	$-1$	$\infty$
Test	$-2$	$0$	
$f''(x)$	$-$	$-$	
$f(x)$	Con. Down ↘	Con. Down ↘	

Concave Down:  $x < -1, x > -1$

Concave Up: never

4) Consider the function  $h(x) = \frac{1}{x^2-4} = \frac{1}{(x-2)(x+2)}$

a) Write the equations of the asymptotes

HA:  $y=0$

VA:  $x=2, x=-2$

b) Make a table showing the increasing and decreasing intervals for the function

$$h'(x) = \frac{0(x^2-4) - 2x(1)}{(x-2)^2(x+2)^2}$$

$$h'(x) = \frac{-2x}{(x-2)^2(x+2)^2}$$

$$0 = -2x$$

$$x = 0$$

$$h(0) = -0.25$$

critical point  $(0, -0.25)$

Test:

	$-\infty$	$-2$	$0$	$2$	$\infty$
Test	$-3$	$-1$	$1$	$3$	
$f'(x)$	$+$	$+$	$-$	$-$	
$f(x)$	inc. ↗	inc. ↗	dec. ↘	dec. ↘	

increasing:  $x < -2, -2 < x < 0$

decreasing:  $0 < x < 2, x > 2$

c) How can you use the table from part b) to determine the behavior of  $f(x)$  near the vertical asymptotes?

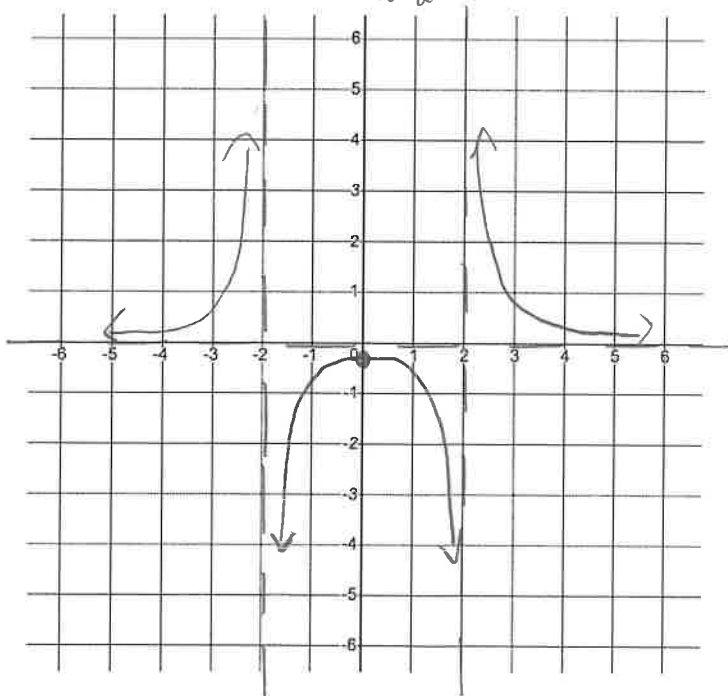
$h(x)$  is increasing to the left of  $x=-2$ ;  $\lim_{x \rightarrow -2^-} h(x) = \infty$

$h(x)$  is increasing to the right of  $x=-2$ ;  $\lim_{x \rightarrow 2^+} h(x) = -\infty$

$h(x)$  is decreasing to the left of  $x=2$ ;  $\lim_{x \rightarrow 2^-} h(x) = -\infty$

$h(x)$  is decreasing to the right of  $x=2$ ;  $\lim_{x \rightarrow 2^+} h(x) = \infty$

d) Sketch a graph of the function.



**Answers:**

1)a) VA:  $x = 2$  and  $x = -2$ ; HA:  $y = 0$ ;  $\lim_{x \rightarrow 2^+} = \infty$ ,  $\lim_{x \rightarrow 2^-} = -\infty$ ,  $\lim_{x \rightarrow -2^+} = -\infty$ ,  $\lim_{x \rightarrow -2^-} = \infty$

b) VA:  $x = 1$  and  $x = 2$ ; HA:  $y = 1$ ;  $\lim_{x \rightarrow 2^+} = \infty$ ,  $\lim_{x \rightarrow 2^-} = -\infty$ ,  $\lim_{x \rightarrow 1^+} = -\infty$ ,  $\lim_{x \rightarrow 1^-} = \infty$

c) VA:  $x = 0$ ; SA:  $y = 2x$ ;  $\lim_{x \rightarrow 0^+} = \infty$ ,  $\lim_{x \rightarrow 0^-} = -\infty$

d) VA:  $x = 3$ ; HA:  $y = 0$ ;  $\lim_{x \rightarrow 3^+} = \infty$ ,  $\lim_{x \rightarrow 3^-} = \infty$

2)a)  $f'(x) = \frac{-2}{(x+3)^2}$ ; no local extrema    b)  $h'(x) = \frac{6}{(x-2)^3}$ ; no local extrema

3)a) decreasing when  $x < -1$ , increasing when  $x > -1$     b) concave down when  $x < -1$  or  $x > -1$

4)a) VA:  $x = 2$  and  $x = -2$ ; HA:  $y = 0$

b) increasing when  $x < -2$  or  $-2 < x < 0$ ; decreasing when  $0 < x < 2$  or  $x > 2$

c) Since the curve is increasing to the left of  $x = -2$ ,  $\lim_{x \rightarrow -2^-} = \infty$

Since the curve is increasing to the right of  $x = -2$ ,  $\lim_{x \rightarrow -2^+} = -\infty$

Since the curve is decreasing to the left of  $x = 2$ ,  $\lim_{x \rightarrow 2^-} = -\infty$

Since the curve is decreasing to the right of  $x = 2$ ,  $\lim_{x \rightarrow 2^+} = \infty$

d)

